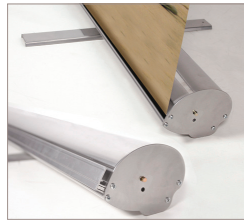


## Banner Stands

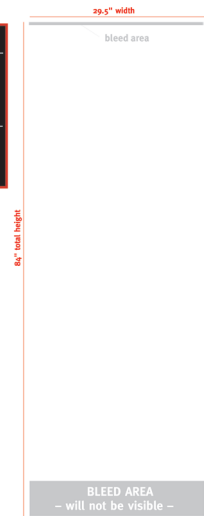
We offer many different styles of banner stands and trade show display systems. Every product displayed has a graphic template which can be downloaded at [www.pistudioprinting.com](http://www.pistudioprinting.com).

### The Contender

retractable banner stand offers sturdy construction with a swivel-out foot, sleek styling and a height of either 77.5" or 106" using an optional 4th pole. Carry bag included. It is available in 4 widths; 24", 29.5", 35.5" and 48".

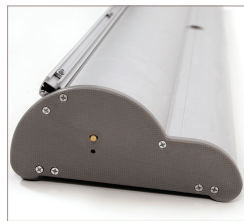


**Retractable Banner: Contender**  
 Total Graphic Area 26.5" X 84"  
 Visual Graphic Area 25.5" X 77.5"  
 Please be sure to include a 1/2" bleed at the top and a 4" bleed at the bottom.  
**General Art Guidelines:**  
 -CMYK color  
 -Do not embed images, supply them  
 -Resolution must be 100-120 dpi  
 -All fonts must be created to outlines

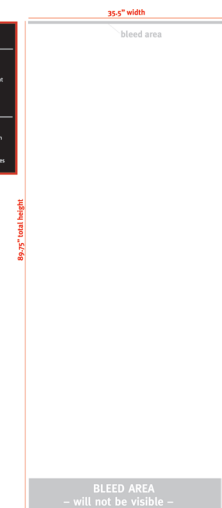


### The Orient

offers quick and simple to use, the Orient combines elegance with excellent value. Finished in Anodized Silver with heavy duty molded end plates. Padded carry bag included. Orient is 83.25" high and available in 3 widths; 31.5", 35.5" and 39.25".



**Retractable Banner: Orient 920**  
 Total Graphic Area 33.5" X 83.25"  
 Visual Graphic Area 32.5" X 81.25"  
 Please note that there is a 1/2" bleed at the top and a 4" bleed at the bottom.  
**General Art Guidelines:**  
 -CMYK color  
 -Do not embed images, supply them  
 -Resolution must be 100-120 dpi  
 -All fonts must be created to outlines

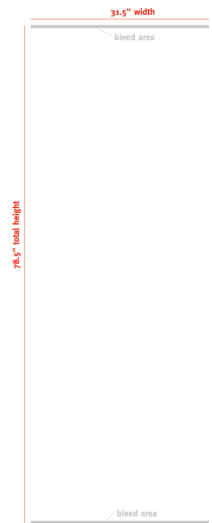


## The Lightning

is a light weight and easy to use, good all-around tension-back banner stand. Snap-lock graphic rails make changing the graphic fast and simple. The Lightning comes complete with a 3 piece bungee-corded pole and a budget carry bag and is 31"hx77"w.



**Springback Banner:  
Spring 2**  
 Total Graphic Area: 31.5" X 78.5"  
 Visual Area: 31.5" X 77.5"  
 Please be sure to include a 1" bleed at the top and bottom of the graphic.  
**General Art Guidelines:**  
 -CMYK color  
 -Do not embed images, supply them  
 -Resolution must be 100-120 ppi  
 -All fonts must be created to outlines

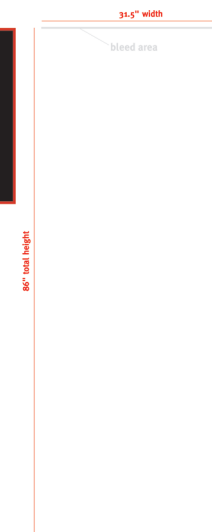


## The Uno

banner stand features all-aluminum construction and can be used with a velcro acceptable fabric panel. Graphic height is variable. All kits include a carry bag with graphic storage. Available in three popular widths 31.5", 36" and 48" by an adjustable height of 34.5" up to 85.5".

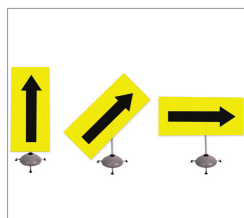


**Telescopic Banners:  
UNO Standard**  
 Total Graphic Area: 31.5" X 85.5" up to 88"  
 Visual Area: 31.5" X 84.5" up to 85.5"  
 Please be sure to include a 2" bleed at the top and bottom of the graphic.  
**General Art Guidelines:**  
 -CMYK color  
 -Do not embed images, supply them  
 -Resolution must be 100-120 ppi  
 -All fonts must be created to outlines



## The Storm Pro

features a heavy duty base that can be filled with water or sand as a weighting agent. Other features include extending stabilizer feet and a telescopic support pole & central hub that allows you to rotate the graphic 45 degrees or from horizontal to vertical. Height is variable, 61.5" or 86" width is 23.5" Double sided unit also available!



**Outdoor Banner:  
Storm Pro**  
 Total Graphic Area: 23.5" X 83" up to 88"  
 Visual Area: 23.5" X 81.5" up to 86.5"  
 Please be sure to include a 2" bleed at the top and bottom of the graphic.  
**General Art Guidelines:**  
 -CMYK color  
 -Do not embed images, supply them  
 -Resolution must be 100-120 ppi  
 -All fonts must be created to outlines

